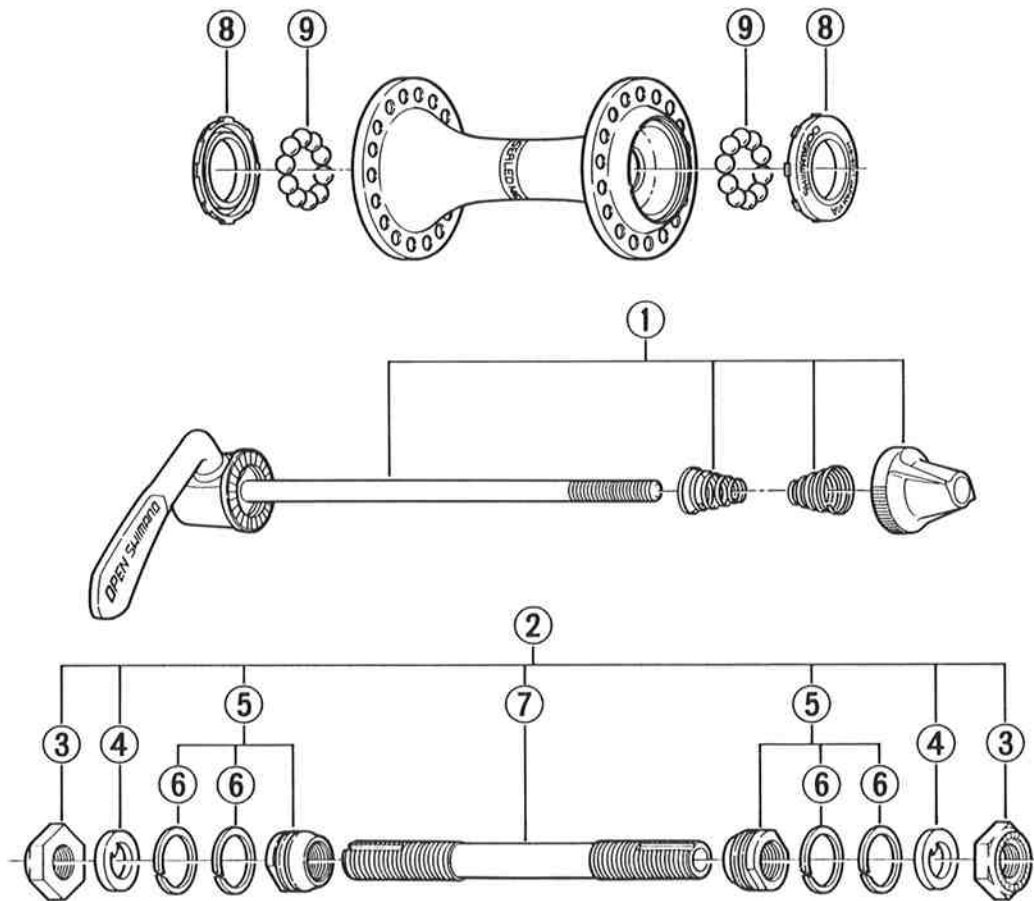




SHIMANO SALES CORPORATION
9530 Cozycroft Avenue, Chatsworth,
California 91311 Tel.(818)882-4411

You may photocopy this sheet and use it as an order form.

HB-6207-F Front Hub SHIMANO 600EX



Over Lock Nut Dimension: 100mm(3-15/16")

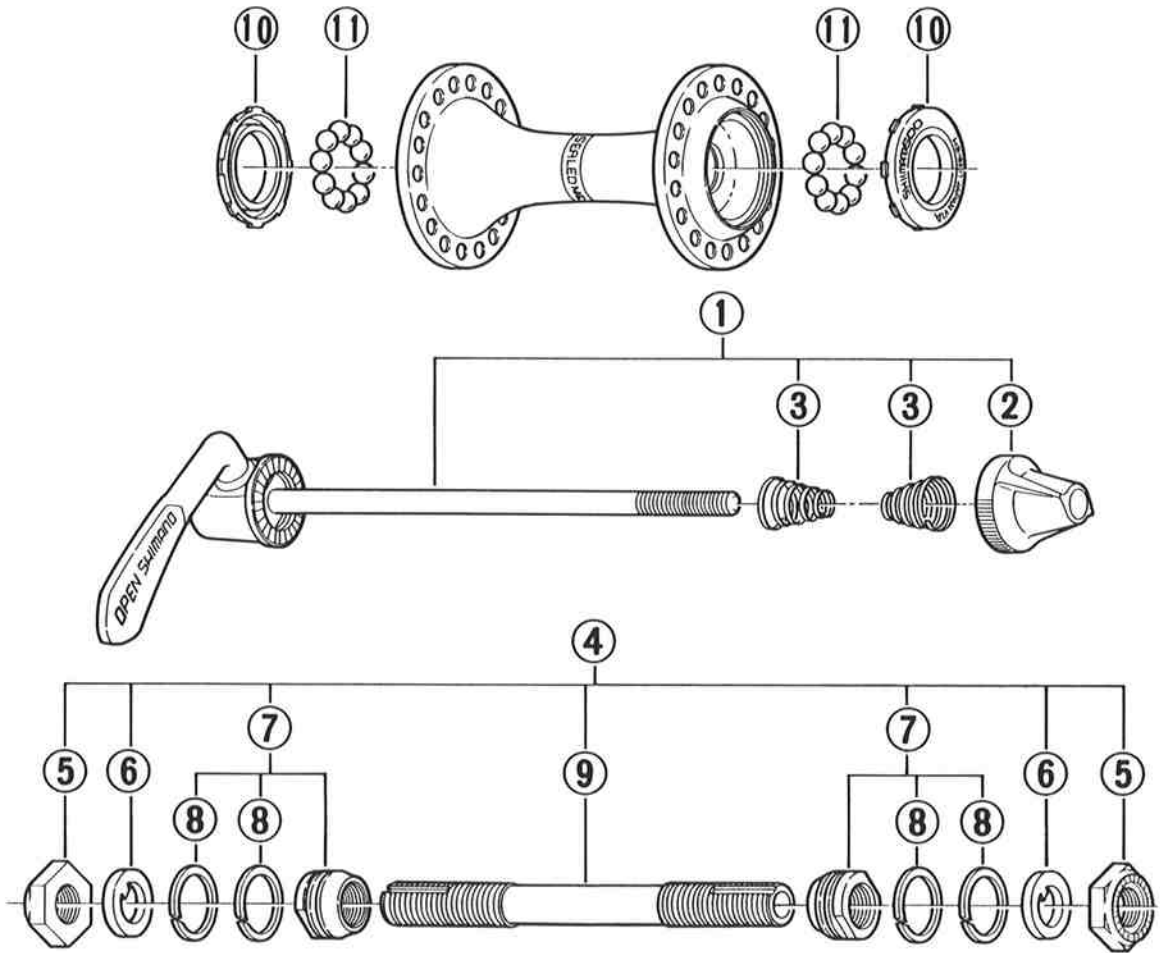
ITEM NO.	PART NO.	DESCRIPTION	Q'TY
* 1	215 9811	Complete Quick Release 129mm(5-3/32")	
2	215 9801	Complete Hub Axle 108mm(4-1/4")	
3	210 0820-1	Lock Nut 3mm	
4	231 1500	Key Washer 1.5mm	
5	215 9822	Cone M9x10.4mm & Seal Ring	
6	236 0300	Seal Ring	
7	231 0301	Hub Axle 108mm(4-1/4")	
8	215 1100	Dust Cap	
9	—	Steel Ball (3/16") 10pcs.	

Printed in Japan 8607-U601B

発行 61. 7. 25

- You may photocopy this sheet and use it as an order form.
- Sie können dieses Blatt kopieren und als Bestellformular verwenden.
- Vous pouvez photocopier cette feuille et l'utiliser comme bon de commande.
- Dit blad kan gecopieerd en als bestelformulier gebruikt worden.
- Potete fotocopiare questo foglio e usarlo come modulo di commissione.

HB-6207-F Front Hub SHIMANO 600EX



Over Lock Nut Dimension: 100mm

ITEM NO.	PART NO.	DESCRIPTION	Q'TY
1	3-215 9811	Complete Quick Release 129mm	
* 2	3-359 9400	Nut for Skewer	
3	231 1100	Volute Spring	
4	3-215 9801	Complete Hub Axle 108mm	
5	210 0820-1	Lock Nut 3mm	
6	231 1500	Key Washer 1.5mm	
7	3-215 9822	Cone M9x10.4mm & Seal Ring	
8	236 0300	Seal Ring	
9	231 0301	Hub Axle 108mm	
10	215 1100	Dust Cap	
11	000 0121	Steel Ball (3/16")	

Printed in Japan 8607-E601B

発行 61.7.25