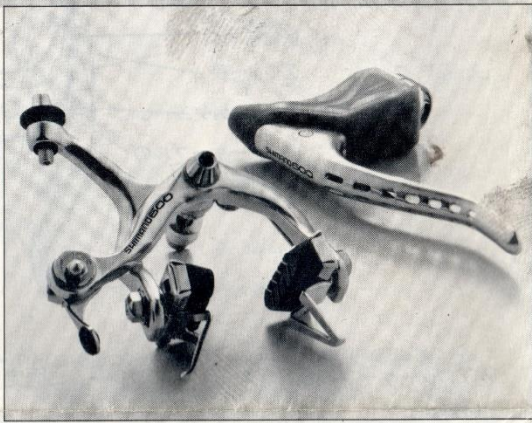


SERVICE INSTRUCTION

New Shimano 600EX Caliper Brake

- Caliper Brake (49 type) BR-6207-49
- Caliper Brake (57 type) BR-6207-57
- Brake Lever BL-6207



NEW
SHIMANO 600 EX

■ Features

BR-6207

- The improved pivot bolt system allows easier brake shoe clearance adjustment. (Quick centering mechanism)
- The eccentric type Quick Release System and Tire Guide are introduced for speedier maintenance.

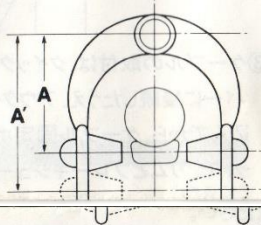
BL-6207

- Small grip is easy to grasp for easy braking.
- The perforated pattern gives the design much more distinctive appearance.

■ Specifications

BR-6207

- Weight: Front 177g/Rear 176g (Inter case of 57 Type)
- Material: Light alloy
- Type: Quick Release System Side-pull Type with Tire Guide
- Size: 57 Type A - A' = 47 - 57 mm (1-7/8" - 2-1/4")
- 49 Type A - A' = 39 - 49 mm (1-17/32" - 1-15/16")
- Optional: Sunken pivot bolt and nut



BL-6207

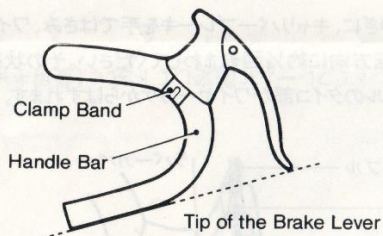
- Weight: 213g (incl. rubber cover) per pair
- Material: Light alloy
- Type: Hooded lever with rubber cover
- Assembly band dia.: 23.8 mm (15/16")
- Inner cable dia.: 1.6 mm (1/16")
- Outer Casing: With liner

■ Note

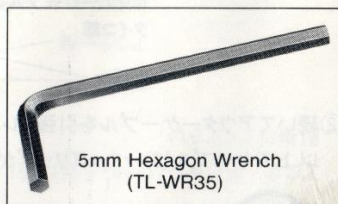
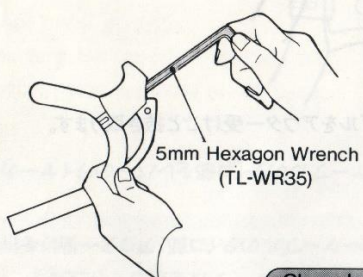
- Keep the brake shoes and rims free from oil and grease.
- If they are stained with oil or grease, wipe them clean with alcohol.
- If the brake does not function well, check the brake shoe clearance and the cable running.

■ Assembling the Brake Lever

- 1) Loosen the clamp bolt and attach the clamp band around the handle bar. Ensure at this time that the bottom of the handle bar grip is on a level with the tip of the brake lever.



- 2) Tighten up the clamp bolt with the 5mm hexagon wrench (TL-WR35) to fix the brake lever to the handle bar.

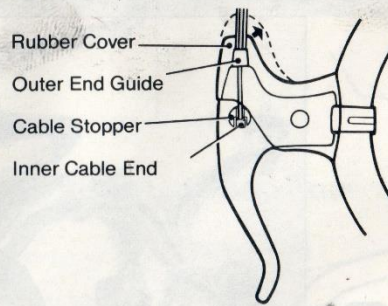


Clamp bolt tightening torque: 60 - 80 kgfcm (50 - 70 in.lbs.)

- 3) Connect the cable to the brake lever.

First, install the outer end guide onto the outer cable and insert the inner cable. Push the inner cable end, together with the outer end guide, into the hole atop the lever rubber cover.

Next, insert the outer end guide into the top section of the lever and hook the inner cable end onto the cable stopper.

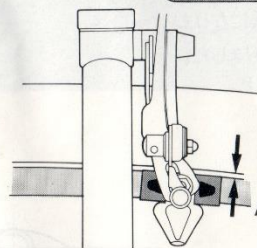


- 4) Fix the outer cable to the frame by the outer band. (This applies only to the rear caliper brake lever.)

■ Assembling the Caliper Brake

- 1) Assemble the brake to the frame the same way as for the side-pull type brake. Tighten the nut somewhat loose for temporary fixing.
- 2) Adjust the brake shoe position. Loosen the shoe fixing nuts to release the brake shoes for free movement. Align the brake shoes with the rim and position them about 1 mm (1/32") lower than the rim outer edge. Retighten the shoe fixing nut.

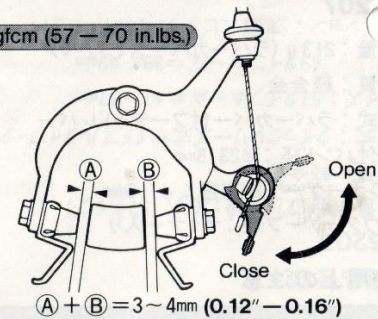
Shoe fixing nut tightening torque: 50 - 70 kgfcm (43 - 60 in.lbs.)



About 1 mm (1/32") lower than the rim outer edge

- 3) To fix the brake cable, set the quick release lever to "CLOSE" position. Connect the cable to the brake lever, pass it through the outer adjusting bolt, catch it between the cable fixing plate and the cable fixing shaft, and tighten up the cable fixing bolt with the 5mm hexagon wrench (TL-WR35). Finally adjust the outer adjusting nut so that the clearance between the rim and brake shoes is 3 - 4 mm (1/8 - 5/32") in total.

Cable fixing bolt tightening torque: 65 - 80 kgfcm (57 - 70 in.lbs.)



A + B = 3 - 4mm (0.12" - 0.16")

- 4) Using the 5 mm hexagon wrench (TL-WR35), turn the pivot bolt clockwise or anticlockwise to make both the brake shoe clearance equal.
- 5) Holding the pivot bolt head in position with the hexagon wrench, tighten up the nut. Now the assembly is complete.

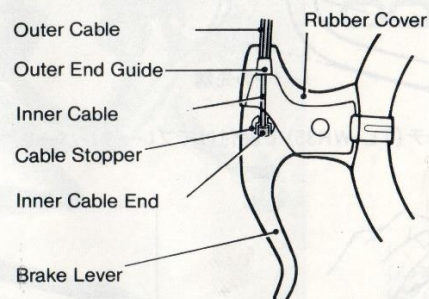
Nut tightening torque: 80 - 100kgfcm (70 - 88 in.lbs.)

- 6) Adjustment

Finally, operate the brake lever to see if the brake works well.

■ Releasing the Cable

- 1) First, remove the wheel. Grip the caliper brake by hand, hold the cable stopper from both sides of the brake lever and turn it a 1/4 rotation in the direction of the wheel rotation. Now release the caliper brake, and the inner cable end is ready to be pulled out of the cable stopper.



- 2) Pull the outer cable to take out the cable together with the outer end guide. Now the cable can be removed from the lever grip.

Please note: Specifications are subject to change for improvement without notice.

SHIMANO SALES CORPORATION
9530 Cozycroft Avenue, Chatsworth, California 91311, U.S.A. Tel. (213) 882-4411

SHIMANO AMERICAN CORPORATION
205 Jefferson Road, Parsippany, New Jersey 07054, U.S.A. Tel. (201) 884-2300

SHIMANO (EUROPE) GmbH
Prof.-Oehler-Str. 9, 4000 Düsseldorf 13, West Germany Tel. (0211) 793097/98

SHIMANO (SINGAPORE) PTE. LTD.
No. 23, Bencoolen Sector, Jooching Town, Singapore 22 Tel. 654777

SHIMANO INDUSTRIAL CO., LTD.
3-77 Omatsucho, Sakai, Osaka, Japan Tel. (0722) 23-3417

© Aug. -1983 by Shimano. N-27 AZ SZK Printed in Japan.